

Renaissance Homes

Signature Series

Rosemont Pointe



Bellissimo Northwest Homesite 27 - \$542,900

2767 Ridge Lane
West Linn, OR

3,174 Sq. Ft. Home
10,711 Sq. Ft. Homesite

4 Bedrooms, 2.5 Baths,
Open Great Room and
Kitchen, Formal
Dining Room,
Main level den,
Bonus Room Upstairs
3 Car Garage

Community Pool!
Completion April 2012
RMLS 12281348

**Please contact Leslee
503-969-0125
for more information.**

- Kitchen includes slab granite countertops with full tile backsplash, GE Profile stainless steel appliance package.
- Great room includes fireplace with shelving on the sides, art niche above.
- Crown molding in master and dining room. Wainscoting in dining room.
- Beautiful hardwood flooring on main level including foyer, kitchen, nook, and dining room.
- Open rail wood staircase.
- Toto sinks and toilets. Delta faucets.
- Master Bath offers custom cabinets, tile counters, separate shower and soaking tub. Dual sink vanity.
- Pre-wire for security system, home theater, and four zones of sound.
- Pre-plumb/wire for Air Conditioning. Pre-wire for Central Vacuum system.
- Built in key cabinet and bench.
- Outdoor covered living.
- High performance.

Winner, 40 Street of Dreams Awards. Celebrating building locally since 1984. We are committed to constantly improving and updating our homes. Artist renderings may not exactly represent final product. Pricing, availability and features subject to change without notice. Square footage noted is approximate. Revise 4/23/12

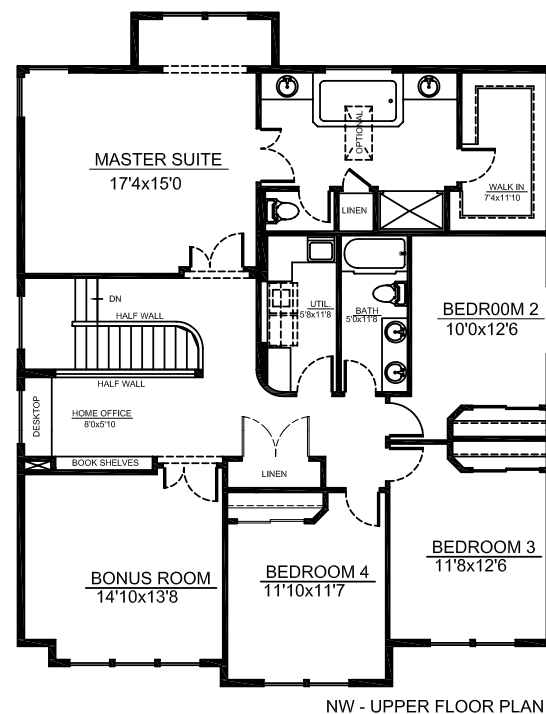
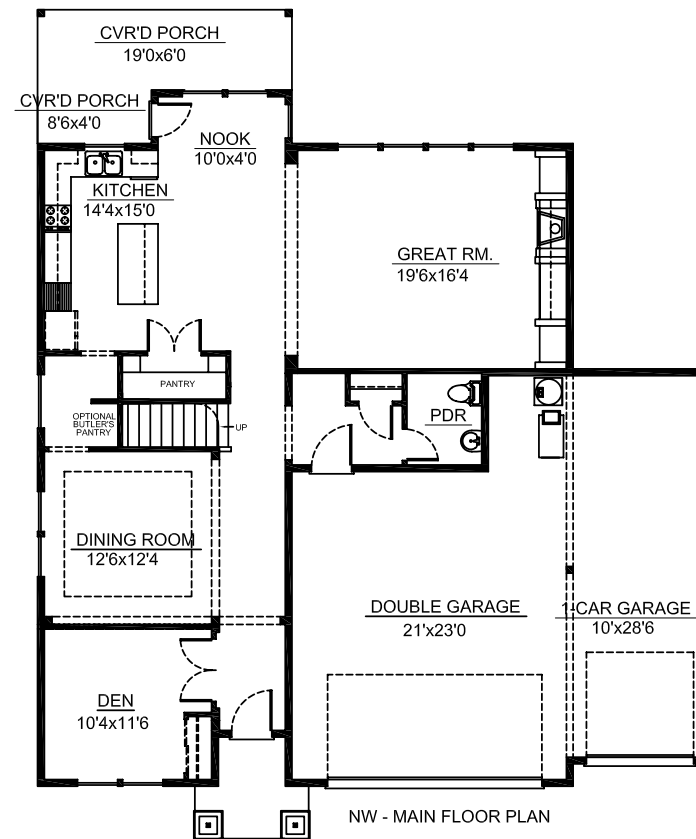


CCB 49955

Renaissance-Homes.com

Bellissimo Northwest

Included Features



Premium Construction Features

- Kiln Dried Lumber – moisture tested
- Low maintenance, 30 year warranty, HardiePlank® lap primed siding with wood wrap on front windows
- Milgard® high efficiency vinyl windows with Argon Gas
- 35 year composition roofing
- Four panel front door in choice of paint color with “Chelsea” brushed nickel handle set with deadbolt
- Sidelight and transom for front door*
- 9’ ceilings on main floor
- 2’x6’ frame double wall construction

Renaissance Advantage

- Certified Earth Advantage & Energy Star®
- Indoor air quality – Fresh air whole house ventilation system
- Efficient ductwork – mastic sealed and protected during construction
- Sealed chipboard reduces indoor air contaminants
- Low VOC adhesive, caulking and paint
- Tile countertops reduce off-gas and promote sanitary surfaces
- 25,000 BTU gas fireplace including fan
- Polar Blanket blow-in wall insulation for superior insulating value
- Open web floor truss system allowing HVAC ducting to stay within conditioned space of home

Classic Kitchens

- Slab granite countertops
- Hardwood floors
- GE Profile™ stainless steel appliances with 36” gas cooktop in island with pop up vent*
- Built in GE Profile™ oven and microwave
- Choice of Alder Shaker cabinets in six distinctive stain colors or a painted style
- Kohler® stainless steel sink under mounted with pull out faucet/sprayer
- Convenient slab granite work center island *
- Convenient under cabinet lighting
- 1/2 horsepower garbage disposal with chrome sink drain trim
- Enclosed pantry with wood shelving*

* Per Plan

Energy Efficiency

- High efficiency 50 gallon gas hot water heater
- 92% forced air gas furnace with Energy efficient digital thermostat
- Pre-wired and pre-plumbed for air conditioning
- DuPont™ Tyvek® HomeWrap® is used to keep the house air and water tight
- GE Energy Star® dishwasher
- High-efficiency compact fluorescent lighting throughout the home
- Premium insulation system exceeds standard code requirement; including blown in insulation in the walls
 - Spray foam applied to rim joists
 - R-49 ceiling insulation
 - R-23 exterior wall insulation
 - R-38 ground floor insulation
- Vented Rain Screen siding system to prevent moisture intrusion
- Gas fireplace with blower to distribute heat and an electronic ignition eliminating a constantly burning pilot light

Elegant Master Suites

- Crown molding in Master Bedroom
- Full 3 1/2” wood wrapped mirrors over vanities
- Designer ceramic tile countertops, backsplashes and shower walls, fiberglass shower floor
- Luxurious soaking tub with separate glass enclosed tile shower
- Easy clean ceramic tile floors throughout bathroom
- Plumbing faucets in choice of brushed nickel, oil rubbed bronze or chrome with double sinks
- Spacious walk-in closets with built in wood shelving
- 36” Alder Shaker cabinets with dual vanities
- Renaissance style double door entry into bedroom

Bathrooms

- Alder Shaker cabinetry
- Plumbing faucets in choice of brushed nickel, oil rubbed bronze or chrome with double sinks in main bath
- Designer ceramic tile countertops and backsplashes
- Durable vinyl flooring in hall baths