

Renaissance Homes
VINTAGE COLLECTION

2446 N HUMBOLDT



The Fremont

\$499,900

Overlook Neighborhood
2,607 Sq. Ft. Home
Plus 310 Sq. Ft. Unfinished Basement
Single Car Attached Garage Plus Storage



- 4 Bedrooms and 3 Baths
- Study/4th Bedroom on the Main
- Spacious Kitchen & Great Room

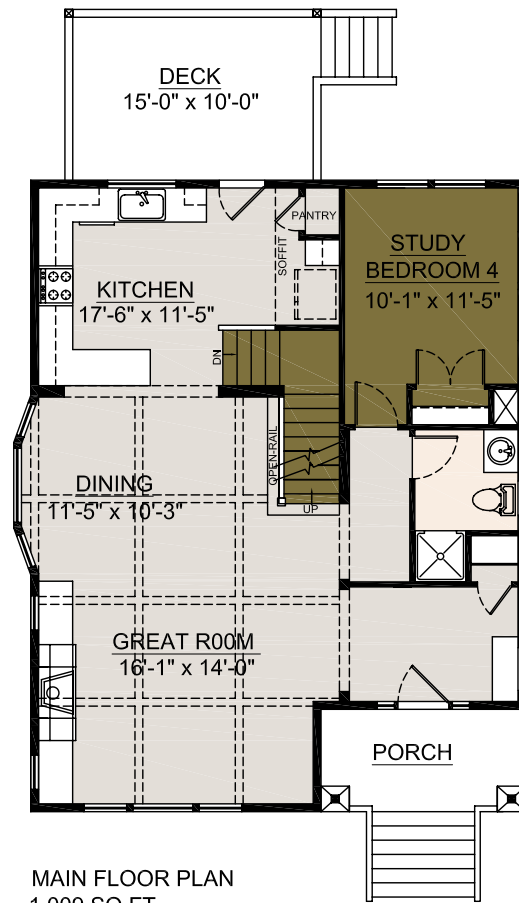
- LEED Certified Energy Efficient home
- Close to restaurants, coffee shops, New Seasons Market
- Near Madrona and Overlook Park
- Adidas headquarters close by
- Schools within 1 mile
RMLS 11542532
- Box beam ceilings
- Granite counters in kitchen.
- Extensive hardwood floors
- Wainscoting
- Fenced yard
- New home warranty
- Rainscreen siding system for durability
- Metro Autumn interior package

Amanda Andruss - Renaissance Homes
(503) 969-4939 Cell
aandruss@renaissance-homes.com

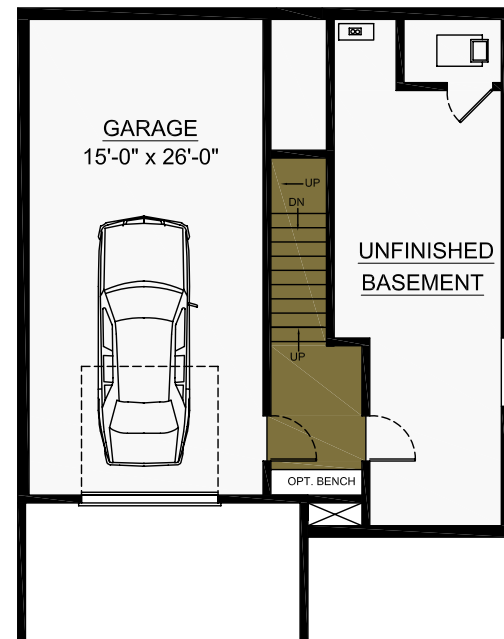
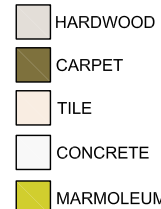
Revised 5/17/12

THE FREMONT

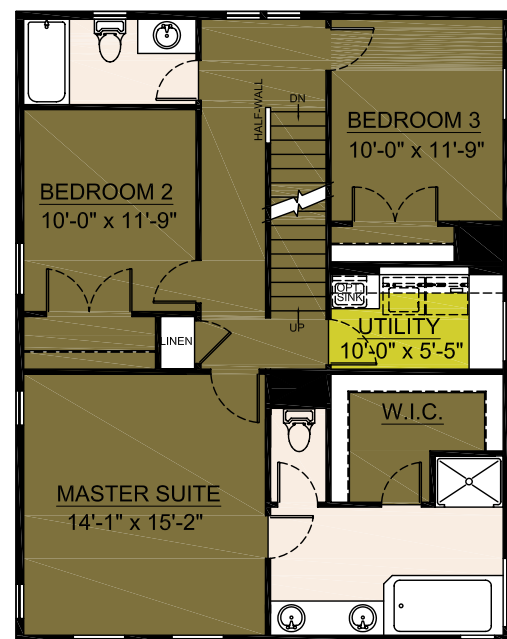
INCLUDED FEATURES



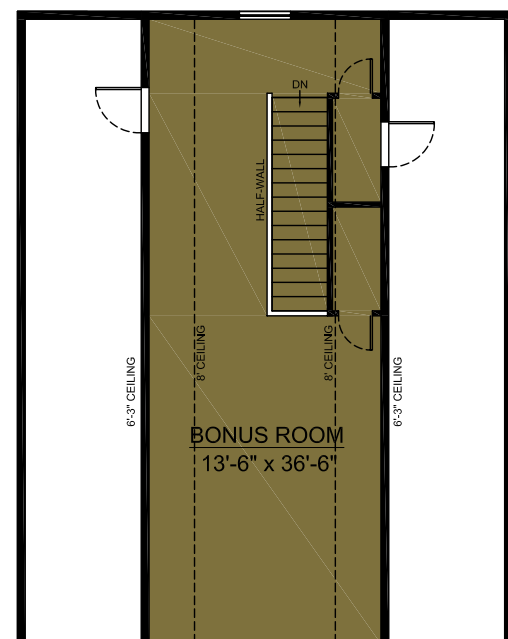
MAIN FLOOR PLAN
1,009 SQ.FT.



BASEMENT FLOOR PLAN
60 SQ.FT.



UPPER FLOOR PLAN
1,035 SQ.FT.



BONUS ROOM
503 SQ.FT.

The Renaissance Way

- An easy to follow road map explaining the building process
- Opportunity to select from nine unique interior packages
- Select your plumbing, lighting, and appliance package
- After selecting your interior package, you will be able to select from an extensive menu of individual options and upgrades to personalize your home
- Numerous meetings and continuous personal communication with your Construction Manager and your Sales Representative throughout the construction of your home
- Meetings with your landscaper, electrician and low voltage specialist to detail plans for those elements of your new home
- Pre-drywall and post-construction certifications

Distinctive Exteriors

- Classic Portland Vintage style architecture*
- **Milgard**® high efficiency vinyl windows with screens on all operable windows
- Brushed concrete driveways and walks
- 120 square foot brushed concrete patio*
- Professionally landscaped front yard
- Two hose bibs, garage side and rear patio
- Two weather resistant electrical outlets, one on garage side and one near rear patio
- Choice of designer paint collections

Richly Detailed Interior Finishes and Features

- Designer selected interior finish packages, each with a choice of Autumn or Spring color palettes
- Hardwood floors in all main floor living areas
- Dramatic coved arches and box beam ceilings
- Open rail staircases
- Custom art and furniture niches*
- All windows and door casings wrapped in 3 1/4" millwork, 5 1/4" base molding - styles vary*
- 36" Gas fireplace with tile surround and painted mantle flanked by built-in, open bookcases
- 5' Board & Batt wainscot in entry and stairway
- Mud room bench with beadboard and shaker pegs*
- Marmoleum flooring in utility room
- Pre-plumbed for air conditioning
- Pre-plumbed for central vacuum system
- Security system

*Per Plan

Classic Kitchens

- Kitchen layouts by our ASID interior designer
- Slab granite countertops with full height tile backsplash
- Hardwood floors
- **GE** stainless steel appliances with gas range
- Built in **GE** microwave
- 36 and 42" height cabinets
- Round knob with cup pulls - variety of finishes available
- **Stainless steel** sink under mounted with single handle stainless steel pull out faucet/sprayer
- Convenient slab granite work center island *
- Convenient under cabinet lighting
- 1/2 horsepower garbage disposal with chrome trim
- Ice maker water source in refrigerator space
- Enclosed pantry with wood shelving

Living Green - Energy Efficiency

- High efficiency tankless hot water heater
- 93% forced air gas furnace with energy efficient digital thermostat
- High-efficiency, tankless water heater
- Vented **Rain Screen** siding system to prevent moisture intrusion
- **Tyvek**® Home Wrap is used to keep the house air and water tight
- GE Energy Star® dishwasher
- High efficiency compact fluorescent lighting throughout the home.
- Premium insulation system exceeds standard code requirement; including blown in "Polar Blanket" insulation in the walls.
 - R-49 ceiling insulation
 - R-23 exterior wall insulation
 - R-38 ground floor insulation
- **LEED Certified energy efficiency**
- **Indoor air quality** - Fresh air whole house ventilation system
- Efficient Ductwork - mastic sealed and protected during construction
- Low VOC adhesive, caulking and paint
- Granite and tile countertops reduce off-gas and promote sanitary surfaces